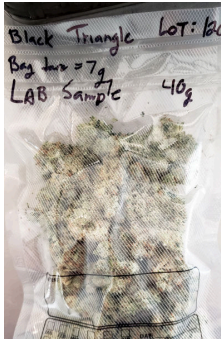


Black Triangle Lot 120

Plant, Flower - Cured



	26.916%	31.336%	Pass
	Total THC	Total Cannabinoids	
ND	11.4%	Foreign Matter	
Total CBD	Moisture		

Cannabinoids

Complete

Analyte	LOQ	Mass	Mass
	%	%	mg/g
THCa	0.010	29.799	297.99
Δ9-THC	0.010	0.782	7.82
Δ8-THC	0.010	ND	ND
THCVa	0.010	ND	ND
THCV	0.010	ND	ND
CBDa	0.010	ND	ND
CBD	0.010	ND	ND
CBDVa	0.010	ND	ND
CBDV	0.010	ND	ND
CBN	0.010	ND	ND
CBGa	0.010	0.755	7.55
CBG	0.010	ND	ND
CBC	0.010	ND	ND
Δ10-THC	0.010	ND	ND
Total		31.336	313.36

PURA ANALYTICAL LABS

Method: HPLC-DAD. LOQ = Limit of Quantitation; ND = Not Detectable, NR = Not Reported, NT = Not Tested. Unless otherwise stated all quality control samples performed within specifications established by the Laboratory. When reporting totals, acidic cannabinoids are multiplied by 0.877 to account for loss of mass from decarboxylation upon heating; therefore this is the POTENTIAL amount upon complete decarboxylation from smoking/ vaping.

Black Triangle Lot 120

Plant, Flower - Cured



Heavy Metals

Pass

Analyte	Mass	LOQ	Limit	Status
	PPM	PPM	PPM	
Arsenic	<LOQ	0.20	0.20	Pass
Cadmium	<LOQ	0.20	0.20	Pass
Lead	<LOQ	0.50	0.50	Pass
Mercury	<LOQ	0.10	0.10	Pass

PURA ANALYTICAL LABS

Method: ICP-MS. Criteria: USP 232; Table 3: Inhalation Use.

LOQ = Limit of Quantitation; The reported result is based on a sample weight with the applicable moisture content for that sample; Unless otherwise stated all quality control samples performed within specifications established by the Laboratory. ND = Not Detectable, NR = Not Reported, NT = Not Tested

Black Triangle Lot 120

Plant, Flower - Cured



Pesticides

Pass

Analyte	LOQ	Limit	Mass	Status	Analyte	LOQ	Limit	Mass	Status
	PPM	PPM	PPM			PPM	PPM	PPM	
Abamectin	0.100	0.100	ND	Pass	Daminozide	0.100	0.100	ND	Pass
Acephate	0.020	0.020	ND	Pass	Deltamethrin	0.500	0.500	ND	Pass
Acequinocyl	0.030	0.030	ND	Pass	Diazinon	0.020	0.020	ND	Pass
Acetamiprid	0.100	0.100	ND	Pass	Dichlorvos	0.100	0.100	ND	Pass
Aldicarb	1.000	1.000	ND	Pass	Dimethoate	0.020	0.020	ND	Pass
Allethrin	0.200	0.200	ND	Pass	Dimethomorph	0.050	0.050	ND	Pass
Azadirachtin	1.000	1.000	ND	Pass	Dinotefuran	0.100	0.100	ND	Pass
Azoxystrobin	0.020	0.020	ND	Pass	Dodemorph	0.050	0.050	ND	Pass
Benzovindiflupyr	0.020	0.020	ND	Pass	Endosulfan I	0.200	0.200	ND	Pass
Bifenazate	0.020	0.020	ND	Pass	Endosulfan II	0.050	0.050	ND	Pass
Bifenthrin	1.000	1.000	ND	Pass	Endosulfan Sulfate	0.050	0.050	ND	Pass
Boscalid	0.020	0.020	ND	Pass	Ethoprophos	0.020	0.020	ND	Pass
Buprofezin	0.020	0.020	ND	Pass	Etofenprox	0.050	0.050	ND	Pass
Carbaryl	0.050	0.050	ND	Pass	Etoxazole	0.020	0.020	ND	Pass
Carbofuran	0.020	0.020	ND	Pass	Etridiazole	0.030	0.030	ND	Pass
Chlorantraniliprole	0.020	0.020	ND	Pass	Fenoxycarb	0.020	0.020	ND	Pass
Chlorfenapyr	0.050	0.050	ND	Pass	Fenpyroximate	0.020	0.020	ND	Pass
Chlorpyrifos	0.040	0.040	ND	Pass	Fensulfothion	0.020	0.020	ND	Pass
Clofentezine	0.020	0.020	ND	Pass	Fenthion	0.020	0.020	ND	Pass
Clothianidin	0.050	0.050	ND	Pass	Fenvalerate	0.100	0.100	ND	Pass
Coumaphos	0.020	0.020	ND	Pass	Fipronil	0.060	0.060	ND	Pass
Cyantraniliprole	0.020	0.020	ND	Pass	Flonicamid	0.050	0.050	ND	Pass
Cyfluthrin	0.200	0.200	ND	Pass	Fludioxonil	0.020	0.020	ND	Pass
Cypermethrin	0.300	0.300	ND	Pass	Fluopyram	0.020	0.020	ND	Pass
Cyprodinil	0.250	0.250	ND	Pass	Hexythiazox	0.010	0.010	ND	Pass

PURA ANALYTICAL LABS

Method: LC-MS/MS Dual Ion Source. Limits are set by Health Canada for Dried Cannabis.
LOQ = Limit of Quantitation; The reported result is based on a sample weight with the applicable moisture content for that sample; Unless otherwise stated all quality control samples performed within specifications established by the Laboratory. ND = Not Detectable, NR = Not Reported, NT = Not Tested

Black Triangle Lot 120

Plant, Flower - Cured



Pesticides

Pass

Analyte	LOQ	Limit	Mass	Status	Analyte	LOQ	Limit	Mass	Status
	PPM	PPM	PPM			PPM	PPM	PPM	
Imazalil	0.050	0.050	ND	Pass	Pirimicarb	0.020	0.020	ND	Pass
Imidacloprid	0.020	0.020	ND	Pass	Prallethrin	0.050	0.050	ND	Pass
Iprodione	1.000	1.000	ND	Pass	Propiconazole	0.100	0.100	ND	Pass
Kinoprene	0.500	0.500	ND	Pass	Propoxur	0.020	0.020	ND	Pass
Kresoxim Methyl	0.020	0.020	ND	Pass	Pyraclostrobin	0.020	0.020	ND	Pass
Malathion	0.020	0.020	ND	Pass	Pyrethrins	0.050	0.050	ND	Pass
Metalaxyl	0.020	0.020	ND	Pass	Pyridaben	0.050	0.050	ND	Pass
Methiocarb	0.020	0.020	ND	Pass	Resmethrin	0.100	0.100	ND	Pass
Methomyl	0.050	0.050	ND	Pass	Spinetoram	0.020	0.020	ND	Pass
Methoprene	2.000	2.000	ND	Pass	Spinosad	0.100	0.100	ND	Pass
Mevinphos	0.050	0.050	ND	Pass	Spirodiclofen	0.250	0.250	ND	Pass
MGK-264	0.050	0.050	ND	Pass	Spiromesifen	3.000	3.000	ND	Pass
Myclobutanil	0.020	0.020	ND	Pass	Spirotetramat	0.020	0.020	ND	Pass
Naled	0.100	0.100	ND	Pass	Spiroxamine	0.100	0.100	ND	Pass
Novaluron	0.050	0.050	ND	Pass	Tebuconazole	0.050	0.050	ND	Pass
Oxamyl	3.000	3.000	ND	Pass	Tebufenozide	0.020	0.020	ND	Pass
Paclobutrazol	0.020	0.020	ND	Pass	Teflubenzuron	0.050	0.050	ND	Pass
Parathion Methyl	0.050	0.050	ND	Pass	Tetrachlorvinphos	0.020	0.020	ND	Pass
Pentachloronitrobenzene	0.020	0.020	ND	Pass	Tetramethrin	0.100	0.100	ND	Pass
Permethrin	0.500	0.500	ND	Pass	Thiacloprid	0.020	0.020	ND	Pass
Phenothrin	0.050	0.050	ND	Pass	Thiamethoxam	0.020	0.020	ND	Pass
Phosmet	0.020	0.020	ND	Pass	Thiophanate-Methyl	0.050	0.050	ND	Pass
Piperonyl Butoxide	0.200	0.200	ND	Pass	Trifloxystrobin	0.020	0.020	ND	Pass

PURA ANALYTICAL LABS

Method: LC-MS/MS Dual Ion Source. Limits are set by Health Canada for Dried Cannabis.
LOQ = Limit of Quantitation; The reported result is based on a sample weight with the applicable moisture content for that sample; Unless otherwise stated all quality control samples performed within specifications established by the Laboratory. ND = Not Detectable, NR = Not Reported, NT = Not Tested

Black Triangle Lot 120

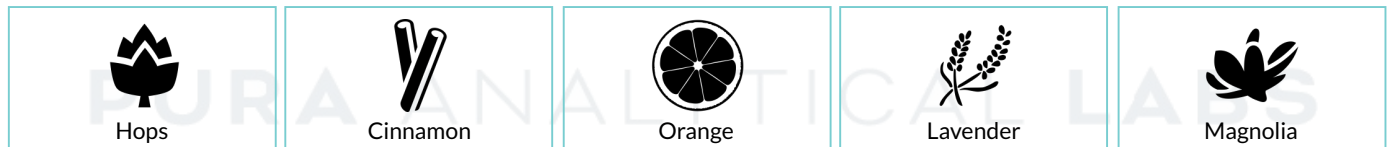
Plant, Flower - Cured



Terpenes

Analyte	LOQ	Mass	Mass		Analyte	LOQ	Mass	Mass
	%	%	mg/g			%	%	mg/g
β-Myrcene	0.001	0.685	6.85		3-Carene	0.001	ND	ND
β-Caryophyllene	0.001	0.401	4.01		α-Cedrene	0.001	ND	ND
Limonene	0.001	0.382	3.82		α-Phellandrene	0.001	ND	ND
trans-Nerolidol	0.001	0.232	2.32		α-Terpinene	0.001	ND	ND
Linalool	0.001	0.156	1.56		Camphor	0.001	ND	ND
α-Humulene	0.001	0.123	1.23		Cedrol	0.001	ND	ND
Farnesene	0.001	0.122	1.22		Eucalyptol	0.001	ND	ND
α-Bisabolol	0.001	0.113	1.13		γ-Terpinene	0.001	ND	ND
β-Pinene	0.001	0.059	0.59		Geraniol	0.001	ND	ND
α-Terpineol	0.001	0.038	0.38		Geranyl Acetate	0.001	ND	ND
α-Pinene	0.001	0.033	0.33		Guaiol	0.001	ND	ND
cis-Nerolidol	0.001	0.029	0.29		Isoborneol	0.001	ND	ND
Endo-Fenchyl Alcohol	0.001	0.026	0.26		Isopulegol	0.001	ND	ND
Camphene	0.001	0.016	0.16		Linalyl Acetate	0.001	ND	ND
Phytol	0.001	0.016	0.16		Menthol	0.001	ND	ND
Ocimene	0.001	0.011	0.11		Nerol	0.001	ND	ND
Fenchone	0.001	0.008	0.08		Pulegone	0.001	ND	ND
Caryophyllene Oxide	0.001	0.007	0.07		Sabinene	0.001	ND	ND
Valencene	0.001	0.007	0.07		Sabinene Hydrate	0.001	ND	ND
Borneol	0.001	0.006	0.06		Terpinolene	0.001	ND	ND
					Total		2.470	24.70

Primary Aromas



Method: GC-FID. LOQ = Limit of Quantitation; The reported result is based on a sample weight with the applicable moisture content for that sample; Unless otherwise stated all quality control samples performed within specifications established by the Laboratory. ND = Not Detectable, NR = Not Reported, NT = Not Tested

Black Triangle Lot 120

Plant, Flower - Cured



Microbials

Pass

Analyte	Limit	Units	Status
Aerobic Bacteria	500000	CFU/g	Pass
Bile-Tolerant Gram-Negative Bacteria	10000	CFU/g	Pass
E. Coli	0	ND	Pass
Pseudomonas aeruginosa		NR	NT
Salmonella	0	ND	Pass
Staphylococcus aureus		NR	NT
Yeast & Mold	50000	24500	Pass

PURA ANALYTICAL LABS

Method: 3M Petrifilm. Criteria: Eur. Ph. 5.1.8; absence of Salmonella in a 25g sample.

Black Triangle Lot 120
Plant, Flower - Cured



Mycotoxins

Pass

Analyte	LOQ	Limit	Units	Status
	PPB	PPB	PPB	
B1	1.00	2.00	ND	Pass
B2	1.00		ND	Tested
G1	1.00		ND	Tested
G2	1.00		ND	Tested
Ochratoxin A	20.00	20.00	ND	Pass
Total Aflatoxins	4.00	4.00	ND	Pass

PURA ANALYTICAL LABS

Method: LC-MS/MS ESI. Criteria: Eur. Ph. 2.8.18 & 2.8.22.

LOQ = Limit of Quantitation; The reported result is based on a sample weight with the applicable moisture content for that sample; Unless otherwise stated all quality control samples performed within specifications established by the Laboratory. ND = Not Detectable, NR = Not Reported, NT = Not Tested